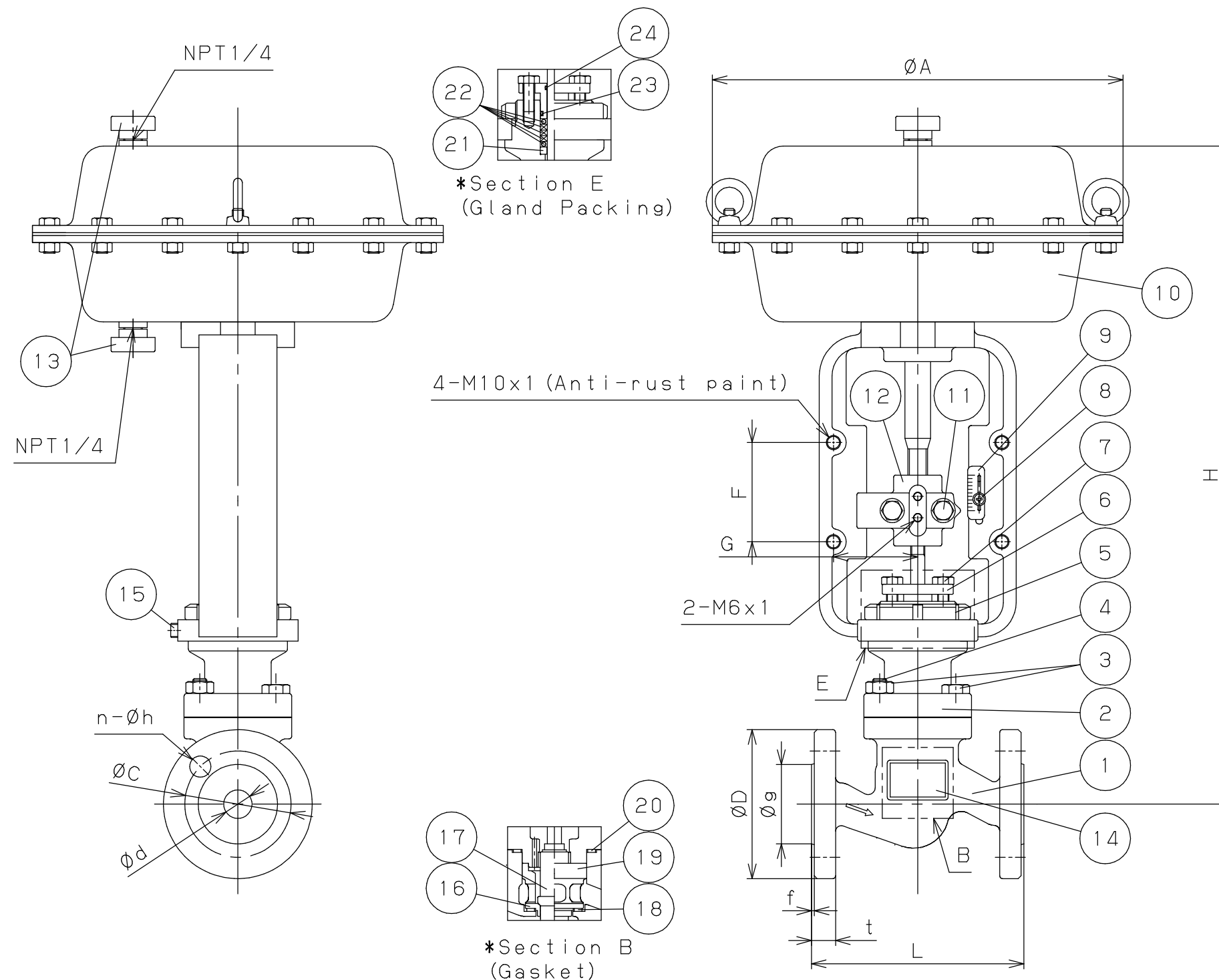


Caution
 This drawing may contain information like the covert intelligence etc. legally defended.
 The duplication, the drawing transcription, and disclosing the content or information etc. to the third party are prohibited.
 Yoshitake inc.



***Section E (Gland Packing etc.)**

24	O-ring (Small)	FKM	1
23	O-ring (Large)	FKM	1
22	Gland Packing	Graphite etc.	1set
21	Packing Washer	Stainless Steel	1
No.	Name of Parts	Materials	Q. TY

***Section B (Gasket etc.)**

20	Gasket (UPR)	Graphite + Stainless Steel	1
19	Cage	Cast Stainless Steel	1
18	Gasket (LWR)	Graphite + Stainless Steel	1
17	Valve + Stem	Stainless Steel	1
16	Valve Seat	Stainless Steel	1
No.	Name of Parts	Materials	Q. TY

15	Lock Bolt	Steel	1
14	Name Plate	Stainless Steel	1
13	Rubber Cap	ABS	1
12	Connector	Steel	1set
11	Connector Bolt Set	Steel	1set
10	Actuator Body	Steel etc.	1
9	Indicator	Aluminum	1
8	Indicator Bolt Set	Stainless Steel etc	1set
7	Gland Bolt	Stainless Steel	2
6	Packing Plug	Stainless Steel	1
5	Bonnet Nut	Steel	1
4	Stud Bolt	15/20A Steel	1set
3	Nut Bolt	15/20A Steel	1set
		25-50A Steel	1set
2	Bonnet	Ductile Cast Iron	1
1	Body	Ductile Cast Iron	1
No.	Name of Parts	Materials	Q. TY

(mm)

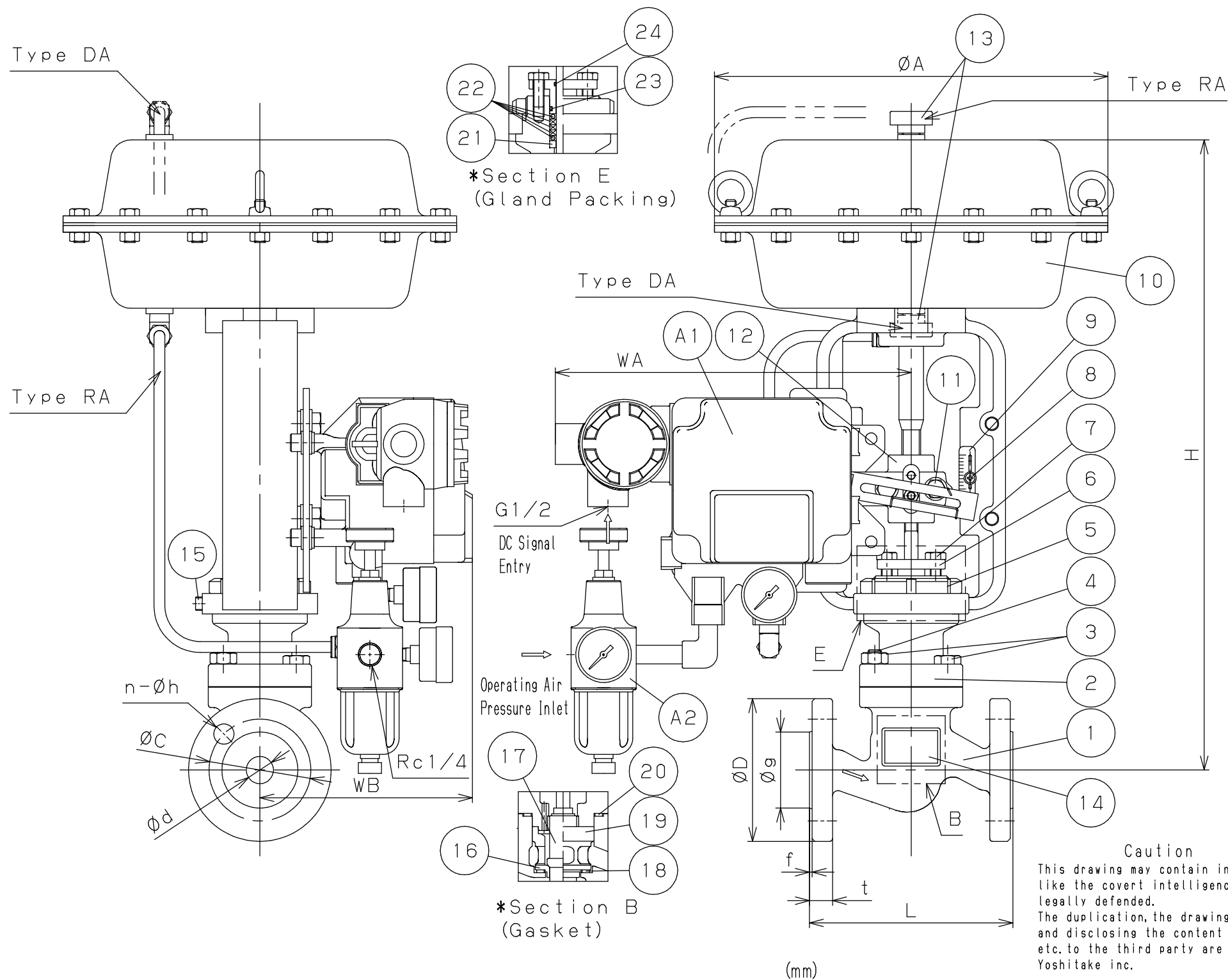
Size	L	H	A	F	G	Flange BSEN PN16/25						Stroke	Weight (kg)	
						d	D	C	g	t	f			n-h
15A	130	464	290	70	60	15	95	65	46	14	2	4-14	25	19
20A	150	464	290	70	60	20	105	75	56	16	2	4-14	25	20
25A	160	464	290	70	60	25	115	85	65	16	3	4-14	25	21
32A	180	465	290	70	60	32	140	100	76	18	3	4-19	25	23
40A	200	468	290	70	60	40	150	110	84	19	3	4-19	25	25
50A	230	576	360	80	79	50	165	125	99	19	3	4-19	40	38

Specification	
Fluid	
Inlet Press.	MPa
Outlet Press.	MPa
Temp.	℃
Flow Rate	

CT-100
 Control Valve (W/O Positioner)

Approval	K. Yasuda
Check	G. Tomita
Drawing	M. Gotoh
Drawing No.	Y-1378-2246-1A
Date	1 DEC. 2023

YOSHITAKE



***Positioner Option**

A2	Air Regulator	Aluminum etc.	1set
A1	E/P Positioner	Aluminum etc.	1set
No.	Name of Parts	Materials	Q.TY

***Section E (Gland Packing etc.)**

24	O-ring (Small)	FKM	1
23	O-ring (Large)	FKM	1
22	Gland Packing	Graphite etc.	1set
21	Packing Washer	Stainless Steel	1
No.	Name of Parts	Materials	Q.TY

***Section B (Gasket etc.)**

20	Gasket (UPR)	Graphite + Stainless Steel	1
19	Cage	Cast Stainless Steel	1
18	Gasket (LWR)	Graphite + Stainless Steel	1
17	Valve + Stem	Stainless Steel	1
16	Valve Seat	Stainless Steel	1
No.	Name of Parts	Materials	Q.TY

15	Lock Bolt	Steel	1
14	Name Plate	Stainless Steel	1
13	Rubber Cap	ABS	1
12	Connector	Steel	1set
11	Connector Bolt Set	Steel	1set
10	Actuator Body	Steel etc.	1
9	Indicator	Aluminum	1
8	Indicator Bolt Set	Stainless Steel etc.	1set
7	Gland Bolt	Stainless Steel	2
6	Packing Plug	Stainless Steel	1
5	Bonnet Nut	Steel	1
4	Stud Bolt	15/20A Steel	1set
3	Nut	15/20A	1set
		25-50A	1set
2	Bonnet	Ductile Cast Iron	1
1	Body	Ductile Cast Iron	1
No.	Name of Parts	Materials	Q.TY

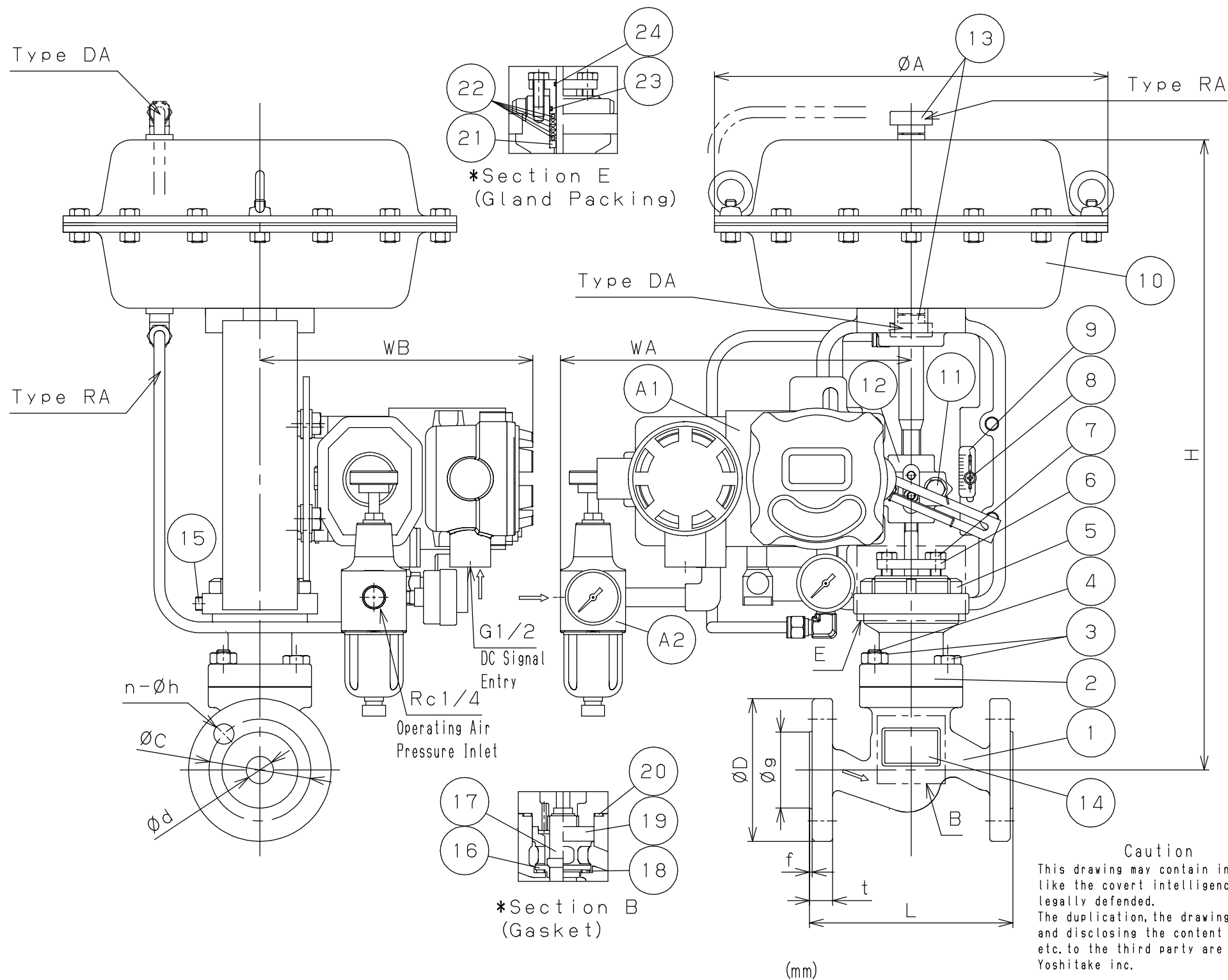
Size	L	H	A	WA	WB	Flange BSEN PN16/25							Stroke	Weight (kg)
						d	D	C	g	t	f	n-h		
15A	130	464	290	262	157	15	95	65	46	14	2	4-14	25	23
20A	150	464	290	262	157	20	105	75	56	16	2	4-14	25	24
25A	160	464	290	262	157	25	115	85	65	16	3	4-14	25	25
32A	180	465	290	262	157	32	140	100	76	18	3	4-19	25	27
40A	200	468	290	262	157	40	150	110	84	19	3	4-19	25	29
50A	230	576	360	281	160	50	165	125	99	19	3	4-19	40	42

Specification	
Fluid	
Inlet Press.	MPa
Outlet Press.	MPa
Temp.	°C
Flow Rate	

**CT-100
Control Valve (E/P Positioner)**

Approval	K. Yasuda
Check	G. Tomita
Drawing	M. Gotoh
Drawing No.	Y-1378-2246-2A
Date	1 DEC. 2023

YOSHITAKE



Caution
 This drawing may contain information like the covert intelligence etc. legally defended.
 The duplication, the drawing transcription, and disclosing the content or information etc. to the third party are prohibited.
 Yoshitake inc.

***Positioner Option**

A2	Air Regulator	Aluminum etc.	1set
A1	Smart Positioner	Aluminum etc.	1set
No.	Name of Parts	Materials	Q. TY

***Section E (Gland Packing etc.)**

24	O-ring (Small)	FKM	1
23	O-ring (Large)	FKM	1
22	Gland Packing	Graphite etc.	1set
21	Packing Washer	Stainless Steel	1
No.	Name of Parts	Materials	Q. TY

***Section B (Gasket etc.)**

20	Gasket (UPR)	Graphite + Stainless Steel	1
19	Cage	Cast Stainless Steel	1
18	Gasket (LWR)	Graphite + Stainless Steel	1
17	Valve + Stem	Stainless Steel	1
16	Valve Seat	Stainless Steel	1
No.	Name of Parts	Materials	Q. TY

15	Lock Bolt	Steel	1
14	Name Plate	Stainless Steel	1
13	Rubber Cap	ABS	1
12	Connector	Steel	1set
11	Connector Bolt Set	Steel	1set
10	Actuator Body	Steel etc.	1
9	Indicator	Aluminum	1
8	Indicator Bolt Set	Stainless Steel etc.	1set
7	Gland Bolt	Stainless Steel	2
6	Packing Plug	Stainless Steel	1
5	Bonnet Nut	Steel	1
4	Stud Bolt	15/20A Steel	1set
3	Nut	15/20A	1set
		25-50A	1set
2	Bonnet	Ductile Cast Iron	1
1	Body	Ductile Cast Iron	1
No.	Name of Parts	Materials	Q. TY

Size	L	H	A	WA	WB	Flange BSEN PN16/25						Stroke	Weight (kg)	
						d	D	C	g	t	f			n-h
15A	130	464	290	259	201	15	95	65	46	14	2	4-14	25	24
20A	150	464	290	259	201	20	105	75	56	16	2	4-14	25	25
25A	160	464	290	259	201	25	115	85	65	16	3	4-14	25	26
32A	180	465	290	259	201	32	140	100	76	18	3	4-19	25	28
40A	200	468	290	259	201	40	150	110	84	19	3	4-19	25	30
50A	230	576	360	278	204	50	165	125	99	19	3	4-19	40	43

Specification	
Fluid	
Inlet Press.	MPa
Outlet Press.	MPa
Temp.	°C
Flow Rate	

CT-100
 Control Valve (Smart Positioner)

Approval	K. Yasuda
Check	G. Tomita
Drawing	M. Gotoh
Drawing No.	Y-1378-2246-3A
Date	1 DEC. 2023

YOSHITAKE