

MS-2, MS-4



■ Features

1. Noise can be reduced by attaching to the end of the piping.
2. Trouble-free simple structure.
3. Available in a higher temperature range than the MS-1 and MS-3.
4. Made of corrosion-free stainless steel (MS-4-13).

■ Specification

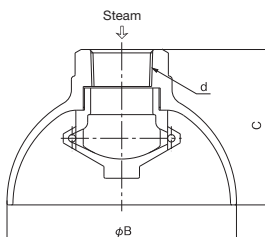
Model	MS-2	MS-4-13
Application	Steam	
Working pressure	0.1-0.7 MPa	
Max. warning sound temperature limit	90°C	
Material	Bronze	Cast stainless steel
Connection	JIS Rc screwed	

■ Dimensions (mm) and Weights (kg)

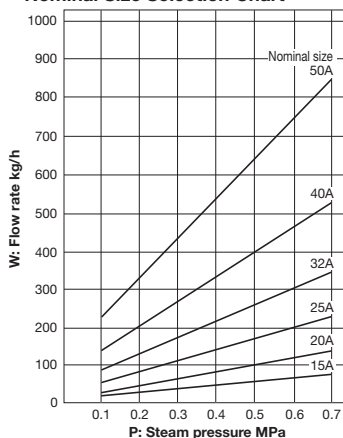
Nominal size	d	C	B	Weight
15A	Rc 1/2	57	70	0.5 (0.4)
20A	Rc 3/4	71	93	0.8
25A	Rc 1	75	125	1.3 (1.2)
32A	Rc 1-1/4	105	155	3.2 (2.2)
40A	Rc 1-1/2	115	175	4.2 (3.9)
50A	Rc 2	142	220	7.0 (5.4)

* Nozzle shape, hole diameter and the number of holes are different depending on the nominal diameter.

* The above values in parentheses are the weights of MS-4-13.



■ Nominal Size Selection Chart



* Flow rate chart is reference value.