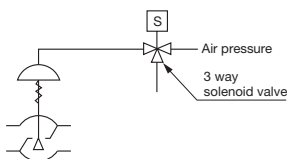


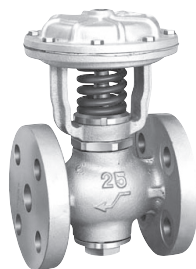
PD-1,2

■Features

1. Usable for air, water, oil and steam.
2. No chattering due to closing action against the flow direction of fluid.
3. Excellent durability of stainless steel valve seat.
4. Excellent durability of synthetic rubber diaphragm.



PD-1



PD-2

■Specifications

Model	PD-1	PD-2
Application	Steam, Air, Cold and hot water, Other non-dangerous fluids	
Working pressure	0-1.0 MPa	
Max. temperature	180°C	
Operation	Air-to-open	
Pilot pressure	0.2-0.25 MPa	
Material	Body	Cast iron
	Valve	Stainless steel
	Valve seat	Stainless steel
Connection	JIS Rc screwed	JIS 10K FF flanged

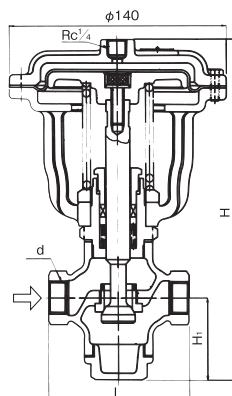
· Available with air-to-close operation type.

* For air operated pressure reducing valve, please refer to the block P.10-10 (GD-37UN standard unit for operation or GD-37N pressure reducing valve).

For 3 way solenoid valve, please refer to the block P.10-11 (DD-37 3way solenoid valve).

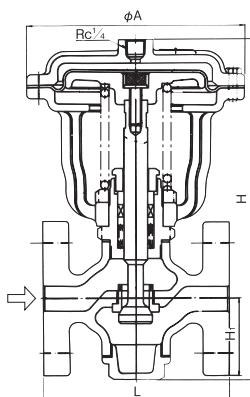
■Dimensions (mm) and Weights (kg)

·PD-1



Nominal size	d	L	H	H ₁	Cv value	Weight
15A	Rc 1/2	90	210	50	5	4
20A	Rc 3/4	100	221	56	7	4.4
25A	Rc 1	110	221	56	11	4.7

·PD-2



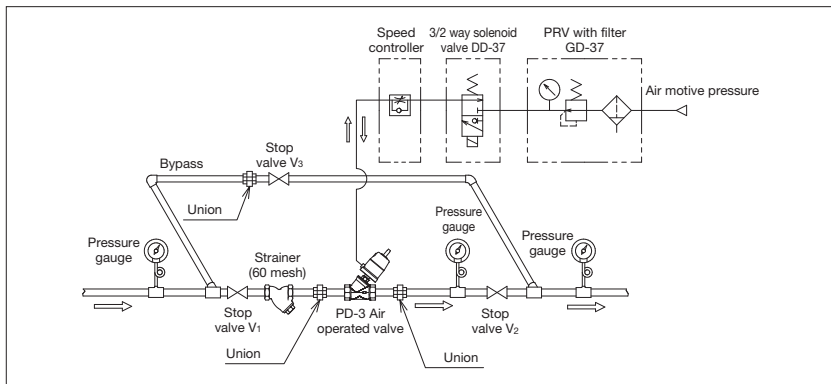
Structure is a little different depending on size.

Nominal size	L	H	H ₁	ϕA	Cv value	Weight
15A	120	210	50	140	5	5.9
20A	130	221	56	140	7	6.6
25A	140	221	56	140	11	8.1
32A	180	412	100	256	16	28.5
40A	180	412	100	256	24	29.0
50A	180	422	105	256	40	30.0

Guidelines for Installing Air Operated Valve

Step
3

■ Piping example

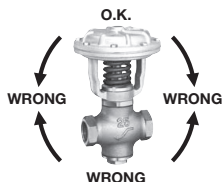


⚠ Warning and caution for installation

1. Before connecting the product to piping, remove foreign substances and scales inside the piping. Note that the seal material must not flow into the inside of the product.
* Contamination of foreign substances can cause valve seat leakage and malfunction.
2. When installation, check the direction of the product so that the fluid flowing and the arrow marked on the product are in the same direction.
3. As shown in the above figure, it is recommended that stop valves, strainers, pressure gauges and bypass line to be installed to the piping. For screwed valve, a union joint is recommended to install for easy maintenance and inspection.
4. Make sure to install a strainer with the mesh size 80-100mesh at the inlet side of the product.
5. Avoid over-tightening of screw and excessive stress imposed from the piping in order to prevent malfunction due to the distortion of the body.
6. Secure a space required for disassembly or removal of the product at the time of maintenance and inspection.

· Installation posture

<PD-1, 2>



Install the air operated valve vertically (the air pressure inlet port must be faced upward).

<PD-3>



Any direction is possible.

12
Air Operated Valve/Control Valve