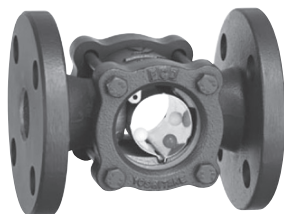


# SB-1S, SB-1F

Plain	Flap	<b>Ball</b>	Spinner
Stainless	Mica plate	Protective wire mesh	With protective cover



SB-1S



SB-1F

## ■ Features

1. Flowing state of fluid can be checked with the movement of the balls inside the sight glass.
2. Compact, lightweight and space saving.
3. Can be connected to horizontal/vertical piping (but glass part should face sideways).

## ■ Specifications

Model	SB-1S	SB-1F
Application	Cold and hot water	
Maximum working pressure	1.0 MPa	
Max. temperature	85°C	
Material	Body	Ductile cast iron
	Glass	Hardened glass
	Ball	Synthetic resin
Connection	JIS Rc screwed	JIS 10K FF flanged

· Glass part and balls are consumable parts.

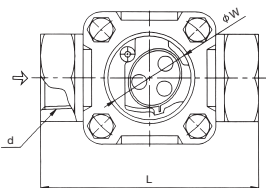
## ■ Dimensions (mm) and Weights (kg)

### · SB-1S

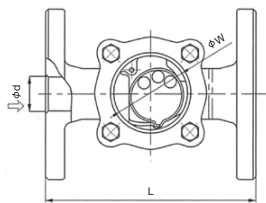
Nominal size	d	L	W	Weight
15A	Rc 1/2	80	35	0.7
20A	Rc 3/4	90	35	0.8
25A	Rc 1	115	44	1.4
32A	Rc 1-1/4	127	57	2.5
40A	Rc 1-1/2	140	57	2.8
50A	Rc 2	162	73	5.4

### · SB-1F

Nominal size	d	L	W	Weight
15A	15	130	35	2.2
20A	20	130	35	2.6
25A	25	150	44	4.1
32A	32	160	57	5.9
40A	40	170	57	6.2
50A	50	200	73	9.5



SB-1S



SB-1F