

SCV-2

The SCV-2 is an inline type check valve to prevent fluid backflow. It is used widely for steam or water (hot water) piping, etc. and effective in preventing water hammer.

■Features

1. Compact piping with Inline type.
2. Can be connected in any direction (horizontal or vertical).

■Specifications

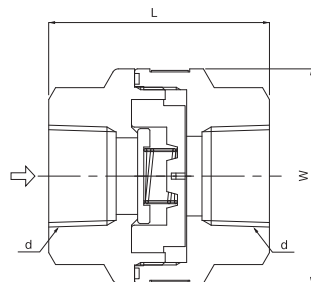
Application	Steam, Cold and hot water	
Maximum pressure	1.6 MPa	
Application temperature	5-220°C	
Minimum valve opening pressure	0.003 MPa	
Material	Body	Stainless steel
	Disc	Stainless steel
Connection	JIS Rc screwed	

- A small amount of fluid leaks out of the product. So, it should not be used for applications requiring complete closing.

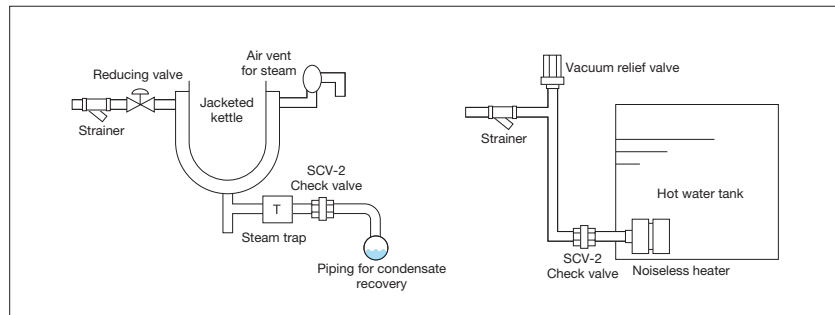


■Dimensions (mm) and Weights (kg)

Nominal size	d	L	W	Weight
15A	Rc 1/2	57	50	0.5
20A	Rc 3/4	57	50	0.45
25A	Rc 1	72	69	1.1
40A	Rc 1-1/2	88	89	2.0
50A	Rc 2	88	89	1.5



■Piping Example



■ Pressure Loss Chart (For water)

